

COMPANY PROFILE



ARAMCO Vendor Code

10114560



SEC Vendor Code

02013075



**Where Quality Engineering
Meets Dependable Service.**

**SUMMIT
ENGINEERING
SOLUTIONS CONT. Co.**



Welcome

Welcome to Summit Engineering Solutions Cont. Co.! We are delighted to have you explore our world of innovative and reliable engineering services. Whether you're here to learn about our capabilities or to partner with us on your next project, we are committed to providing you with exceptional service and solutions that exceed your expectations. Together, we can build a future grounded in excellence, trust, and collaboration.

416-4
416-2
416-2
416-2
416-2

About Our Company

Summit Engineering Solutions Cont. Co. specializes in providing top-notch services across various domains. With years of experience and a commitment to excellence, we ensure that all projects meet the highest standards of safety, efficiency, and quality.

We are expert in the following areas

1. Electrical Engineering Services:.
2. Civil, Architectural & Fitout Works
3. Contract Support Service

Our Business Activities extend to cover all areas of Electromechanical Works including

1. HVAC System
2. Fire Detection & Alarm System
3. Plumbing & Sanitary Works
4. Fire Suppression & Extinguishing System.
5. Building Lighting and Power System

At Summit Engineering Solutions, we pride ourselves on being your reliable partner in achieving your project goals.

Message From Our Board Of Directors

At Summit Engineering Solutions Cont. Co., our commitment to excellence drives us to deliver outstanding results in every project. With expertise in complex projects, we ensure top-quality work through our skilled and reliable workforce. We offer a wide range of high-quality products, and our customer-centric approach guarantees satisfaction and success. We look forward to partnering with you to achieve your engineering goals.

Excellence in every project, quality in every product, and dedication in every partnership are the cornerstones of our mission at Summit Engineering Solution.

Mission

To deliver superior electrical engineering solutions that exceed our clients' expectations through innovation, quality, and dependable service. We aim to provide comprehensive solutions that address the unique challenges of each project, ensuring success and satisfaction.

Vission

To be the leading provider of electrical engineering services and solutions, recognized for our excellence and reliability. We strive to set the standard in the industry by continuously improving our services, embracing new technologies, and maintaining a customer-centric approach.

Our Services

Electrical Engineering Services

We offer comprehensive electrical engineering services that include design, installation, maintenance, and troubleshooting for various electrical systems. Our team of experts ensures that every project is executed with precision and meets the highest standards of safety and efficiency.

Civil Works

Our civil engineering solutions cover a wide range of services, including construction, infrastructure development, and maintenance. We handle complex projects with precision and quality.

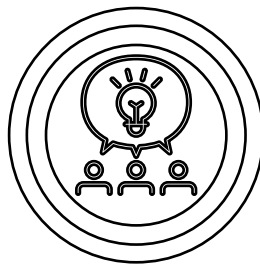
Contract Support Service

Our contract support service offers a skilled and experienced workforce along with equipments for various projects, ensuring:

- 🌀 Qualified Personnel: Access to a pool of highly trained and certified professionals.
- 🌀 Flexible Solutions: Services that can be scaled according to project requirements.
- 🌀 Equipment: Extensive Motorized Vehicle, Aerial Equipment and Generators.
- 🌀 Efficiency: Improved project timelines and productivity with our reliable workforce.



We keep our promises and meet our commitments. We build relationships with clients, employees and sub consultants on a foundation of trust and respect.



We are fully committed to ensure a stress-free workplace, where everybody enjoys peace of mind. Respect for people means to care for them and to protect the environment in which we live and work.



We commit ourselves to a long-term partnership focused on creating value for our clients, and we achieve this through the professionalism of our people and the quality of our services.

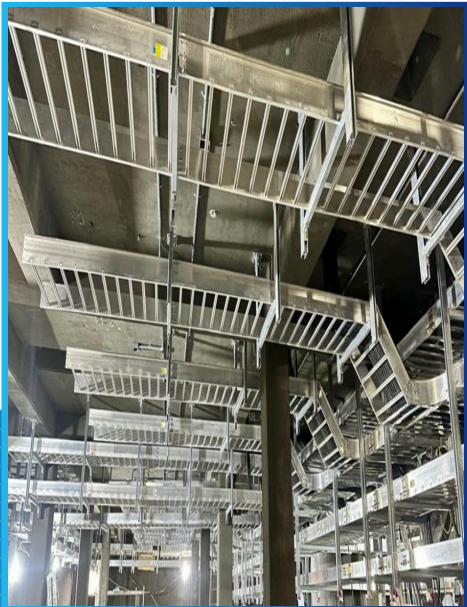
Our Electrical Project Experience

Replacement of Existing Outdoor Aindar Sub-30 with new GIS Substation for Saudi Electricity Co.

Scope: Installation of GIS, Power Transformer, Protection, Control & SAS panels including cable laying and termination.

Duration : 6 Months (June 2025)

Contractor: Abahsain Consolidated Co.



Our Electrical Project Experience

Interface works with Yanbu 4 - 110 KV HV substation for IWTP02 Project for Saudi Water Company

Scope: Installation of Power Transformer, Cable Tray, MDP, lighting panel, Generator, laying of MV and LV cable, & Cable termination.

Duration : 7 Months (April 2026)

Contractor: Energy & Power Cont. Co.



Our Electrical Project Experience

Replacement of 13.8kV SWGR

Project Location: Jubail, Saudi Arabia

Project Status: Completed

Scope of work: Replacement of Existing 13.8 kV SWGR with the new SIEMENS SF6 SWGR including Termination of LV Power & control cable. Termination of 13.8kV power cable.



Revamping of 480 Volt Generator

Project Location: Jubail, Saudi Arabia

Project Status: Complete

Scope of Work: Replacement of Control system of Generator by Dale Engineering solutions.

Other Electrical Projects

SL.	Project Name	Client		Status
		Contractor	End Client	
1	Installation of Control and Protection Panle including cable laying & termination in Ain dar S/S	Abhasain Consolidating Co.	NG/SEC	Ongoing
2	Installation of MV & LV cable laying, termination & Testing	Energy & Power Cont. Co. Ltd.	NG/SEC	Complete
3	MV & LV cable laying, termination & Testing	Rommel Electro Arabia	NG/SEC	Complete

Our Electrical Project **Experience**

MV Cable Fault Location Test, Damage Repair and Termination.

Project Location: Jafurah, Saudi Arabia

Project Status: Ongoing

Scope of work: Fault location Test, Rectify Fault by Splicing, Insulation Repair, Termination and High-Potential test of Underground MV Cable.

Duration: 8 Months (April 2025)

Client: SEPCO.



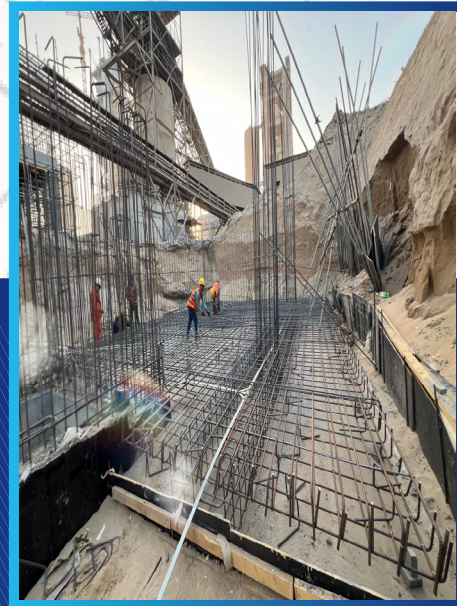
Our Civil Project **Experience**

EPCC 10,000TPD Clinker Cement Plant Project

Scope: Civil work including Reber Binding, Shuttering and Concreting work for Additive Crusher Area 1, 2 & 3, Transfer Foundation 3 & 4, Clinker Silo, Gallery area, & many more buildings.

Duration : 8 Months (May 2025)

Contractor: SINOMA



Architectural & Fitout Project

EPCC 10,000TPD Clinker Cement Plant Project

Scope: Finishin Work including Break laying, Tie beam, Plastering, Painting, Screed, Tiles, Gypsum etc. work for Additive Crusher Area 1, 2 & 3, Transfer Foundation 3 & 4, Clinker Silo, Gallary area, & many more buildings.

Duration: 6 Months (July 2025)

Contractor: SINOMA



Architectural & Fitout Project

Roshan Ewan Sedra 2 - Riyadh

Tiles work of 3 Stories Villa.

Poreciline tiles for Wall, Bathroom, Floor & Marbel tiles for Stairs for 21 villas

Project Location: Riyadh

Completed: May 2025



Our Civil Project Experience

Haradh RTR Pipeline Project

Project Length: 130 km

ROW Preparation, Trench Excavation, Backfilling & Berming

Project Duration: 12 months (Completed on June 2023)



Jafurah Upstream Pipeline Project

Project Length: 175 km

12" & 14" RTR Pipe Lowering and Installation, Trench Excavation, Backfilling & Berming.

Project Duration: 18 months Completed on October 2024)



Our Civil Project

Dismantling and transportation of TFC of 9 GCP at Haradh.

Contractor: TR

Client: ARAMCO

Project Status: Completed

Scope of work: Dismantling and Transportation of electrical equipment, and Demolition and Dumping of TFC at Haradh.



Our Civil Project

Preparation and Painting of 230kV OHTL Foundation.

Contractor: SEPCO

Client: Future Technologies

Project Status: Completed

Scope of work: Supply of paint, Preparation and Painting of 230kV OHTL Tower foundation as per SEC standard.



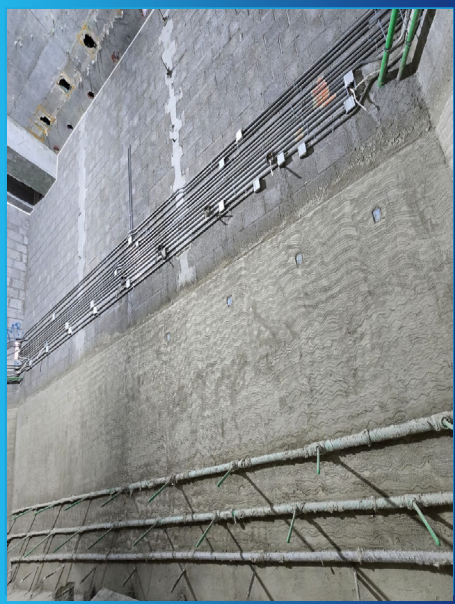
Architectural & Fitout Project

The Avenues Khobar

Scope: Plaster work Including mesh installation, angle installation for prayer rooms, bathrooms, corridors and others.

Status : Ongoin (Starting date November 2025)

Contractor: Havelock1



Architectural & Fitout Project

The Avenues Khobar

Scope: Screed work for for prayer rooms, bathrooms, corridors and others.

Status : Ongoin (Starting date January 2026)

Contractor: Havelock1



Our Civil Project Experience

Mansura Massrah Gold Project

Scope: Construction of substation building, infrastructure work, Pipe Rack, Tunnel, Water Tank, Conveyer Belt, HFO, & LFO circular, UG/AG tanks, Engine Hall, Warehouse.

Duration : 22 Months (Feb 2021)

Contractor: L & T



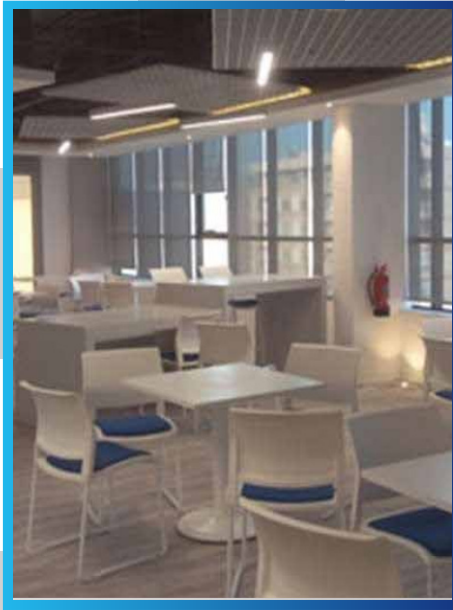
Architectural & Fitout Project

McDermott Arabia Office

Scope: Structural Works, Complete Office Fitout Works covering 7000sqm

Project Location: Al- Khobar

Completed: October 2016



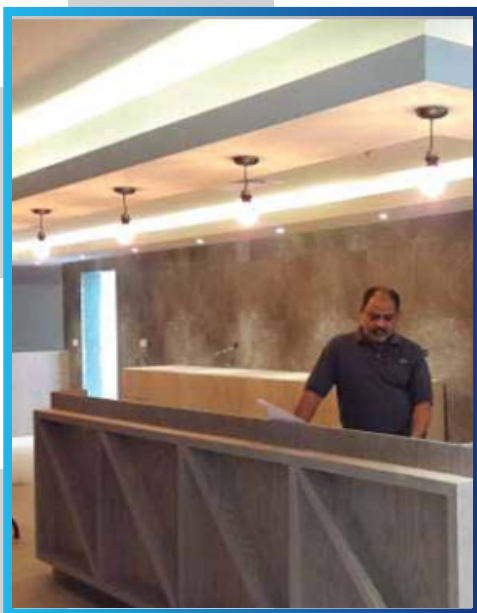
Architectural & Fitout Project

Worley Parsons Office

Scope: Complete Office Fitout Works covering 16,800sqm

Project Location: Al- Khobar

Completed: August 2016



Architectural & Fitout Project

Novartis Office

Scope: Complete MEP Structure & Architectural Covering 1,300sqm

Project Location: Al- Khobar

Completed: October 2015



Our Mechanical Project **Experience**

Installation of Fire-Fighting System for Industrial Facility and warehouse.

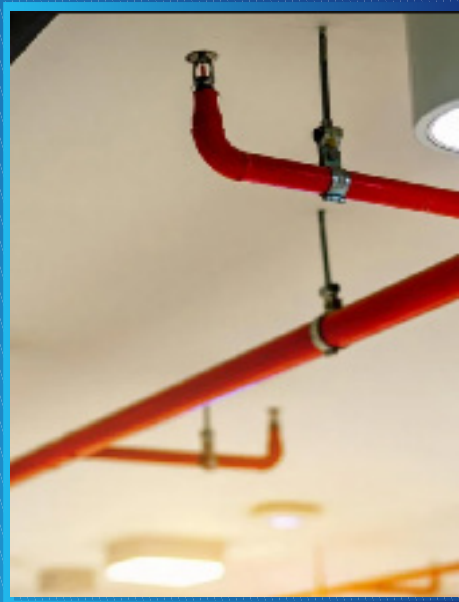
Contractor: EPC

Client: ARAMCO

Project Status: Completed

Scope of work: Installation of fire sprinkler piping network, including sprinkler heads, valves, and fittings, up to the motor connection point. Work included alignment, fixing, and pressure testing of the installed system.

Project Duration: 6 Months (Completed on December 2023).



Our Mechanical Project **Experience**

Installation of Fire-Fighting System for Shopping mall.

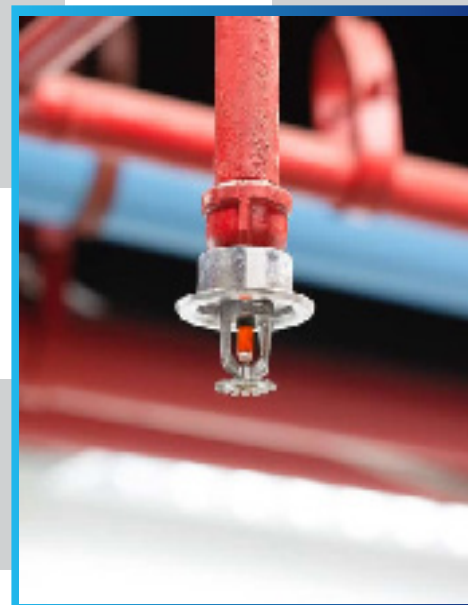
Contractor: ABRAR

Client: Saudi Master Baker LTD.

Project Status: Ongoing

Scope of work: Execution of fire sprinkler pipeline installation, covering sprinkler nozzles, valve assemblies, and associated fittings, up to the designated motor interface. The project includes positioning, securing, and hydrostatic testing of the complete setup.

Project Duration: 180 Days.



Our Telecommunication Project Experience

FOC Connection Withing Juaymah Substation

Contractor: EPC

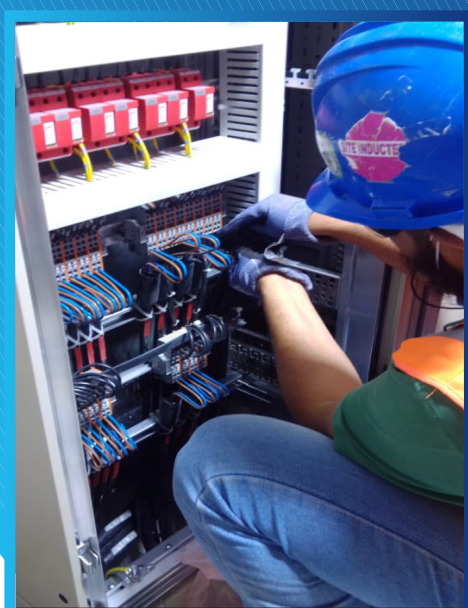
Client: ARAMCO

Project Length: 854 meter

Project Status: Completed

Scope of work: Duct and Conduit Installation, FOC Laying, Splicing
& Termination, OTDR Testing, End to End testing,

Project Duration: 1 Months (Completed on August 2018).



Our Telecommunication Project Experience

Power Supply to Safaniya - Phase 1 (Complete FOC)

Contractor: Abahsain

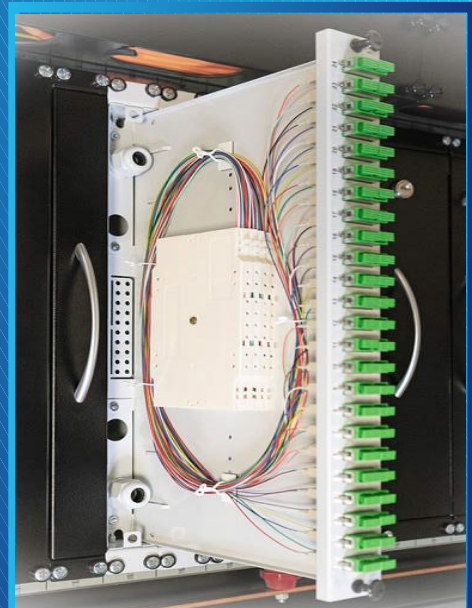
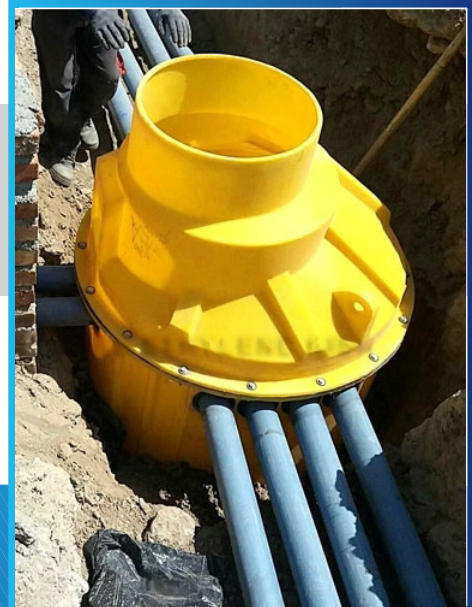
Client: ARAMCO

Project Length: 150 km

Project Status: Completed

Scope of work: ROW Preparation, Trenching, Duct and Conduit Installation,
FOC Laying, Splicing & Termination, OTDR Testing, End to End testing,

Project Duration: 3 Months (Completed on June 2016).



Our Telecommunication Project Experience

Testing and Splicing of FOC

Contractor: SEPCO

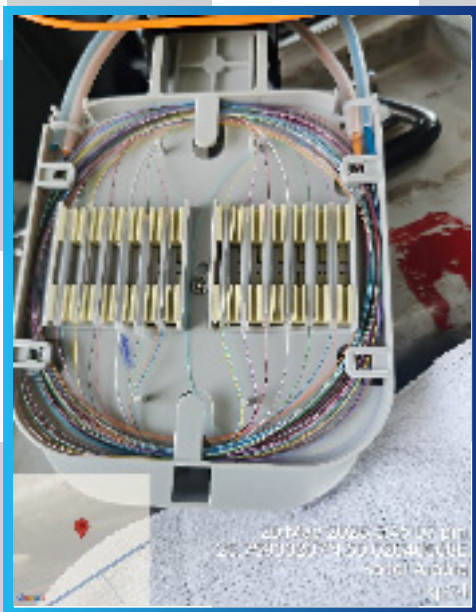
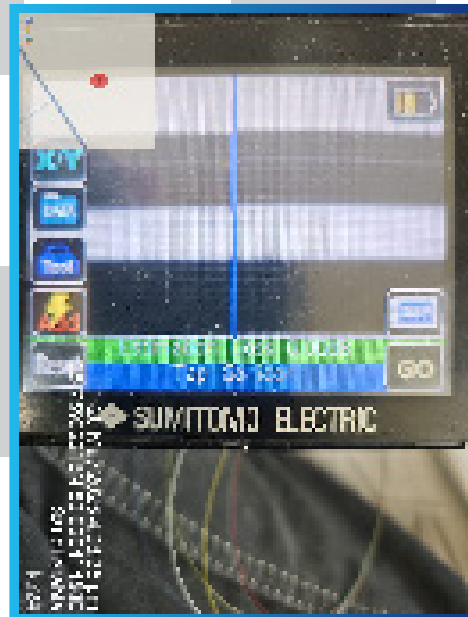
Client: Future Technologies

Project Length: 400 km

Project Status: Ongoing

Scope of work: Drum Testing, Post Installation Testing, Splicing & Enclosure Installation, OTDR Test, Power Matrix Test & End to End Testing.

Duration: 6 Months (March 2025).



Our Telecommunication Project Experience

Haradh FOC Laying, Splicing and Testing

Contractor: SAIPEM

Client: ARAMCO

Project Length: 130 km

Project Status: Completed

Scope of work: ROW Preparation, Trenching, Duct and Conduit Installation, FOC Laying, Splicing & Termination, OTDR Testing, End to End testing

Project Duration: 6 Months (Completed on March 2023).



Telecommunication Project

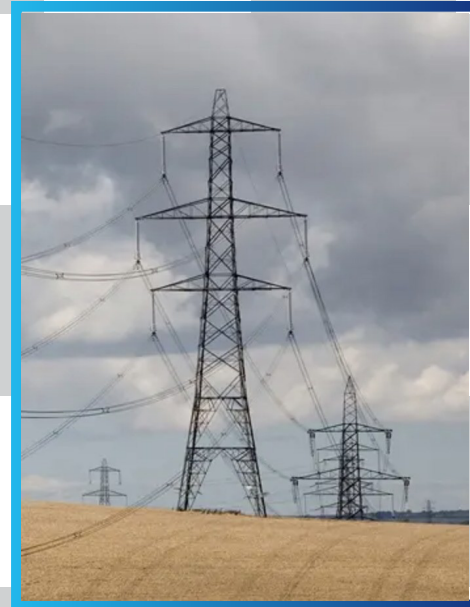
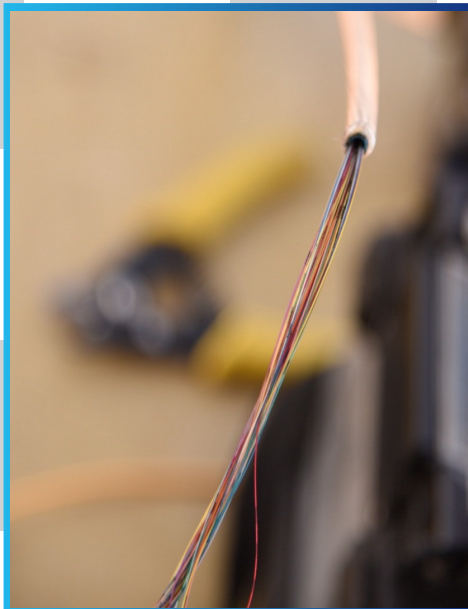
Testing and Splicing of OPGW.

Contractor: SEPCO

Client: Future Technologies

Project Status: Completed

Scope of work: Testing, Splicing, Power Meter, End-to-End of 230kV OPGW for Line 1 and Line 2 at Jafura.



Our Telecommunication Project Experience

Splicing and termination of Copper internet Cable in Padestal Installation.

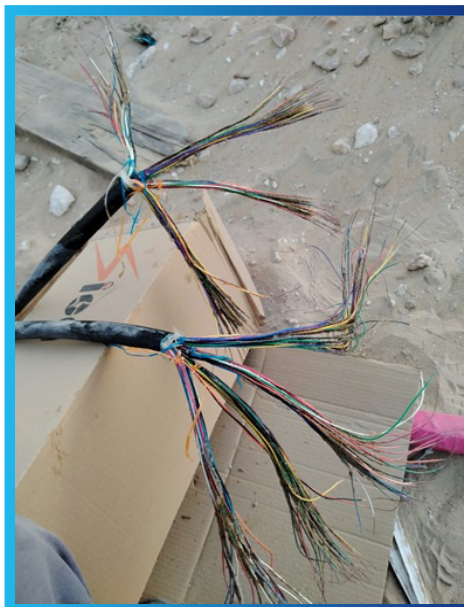
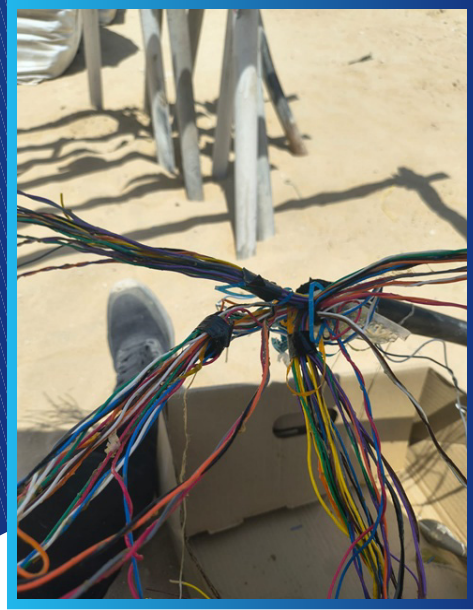
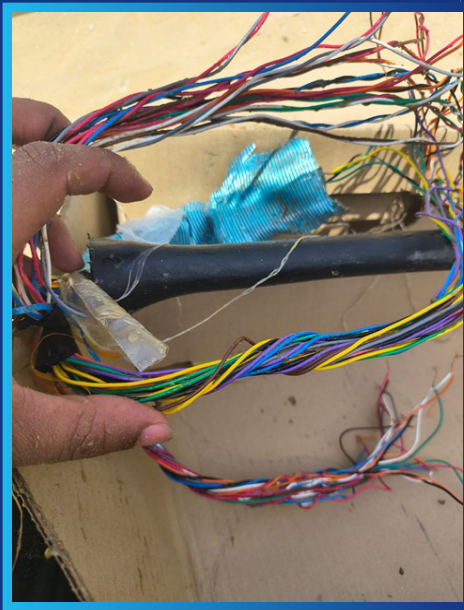
Contractor: SEPCO

Client: Future Technologies

Project Status: Completed

Scope of work: Replace existing 50 pair Copper Internet Cable, work includes Cable preparation, Splicing, Loop back Test, MOS, & Padestal Installation.

Duration: 1 Months (Completed on June 2025).



Electrical Engineering Services

At Summit Engineering Solutions Cont. Co., we provide a comprehensive range of electrical engineering services to meet all your project needs. Our expertise spans from initial design to ongoing maintenance, ensuring top-notch quality and reliability.

Design

At Summit Engineering Solutions Cont. Co., we provide a comprehensive range of electrical engineering services to meet all your project needs. Our custom electrical system designs are tailored to meet specific project requirements. Utilizing the latest technology, we create detailed blueprints that prioritize performance, efficiency, and safety. Our designs ensure compliance with industry standards and incorporate innovative solutions to enhance system functionality. Our expertise spans from initial design to ongoing maintenance, ensuring top-notch quality and

Installation

Our professional installation services guarantee safe and efficient operation. Our skilled technicians manage the entire installation process, from planning to execution and final testing. We handle various installations, including power distribution, lighting, control systems, and renewable energy solutions, with a focus on quality and timely completion.

Maintenance

Regular maintenance is crucial for preventing downtime and ensuring continuous operation. We offer scheduled maintenance plans and on-demand services, including inspections, testing, cleaning, and component replacements. Our maintenance programs aim to optimize system performance and ensure safety compliance.

Troubleshooting

When issues arise, our expert troubleshooting services quickly identify and resolve problems. Using advanced diagnostic tools, we handle a wide range of electrical issues, providing effective solutions to restore normal operation promptly. Our team delivers detailed reports and reliable repairs to prevent future problems.

At Summit Engineering Solutions Cont. Co., we are dedicated to delivering superior electrical engineering services that meet the highest standards. From design and installation to maintenance and troubleshooting, we ensure every project is executed with precision and excellence. Trust us to be your reliable partner in achieving optimal electrical system performance.

Civil Works

At Summit Engineering Solutions Cont. Co., our Architectural & Civil works services are designed to meet the diverse needs of residential, commercial, and industrial projects. We ensure the highest quality and reliability in every aspect of our work.

Construction

We provide comprehensive construction services for residential, commercial, and industrial projects. Our team of experienced professionals manages all phases of construction, from initial planning and permits to building and finishing. We utilize advanced techniques and materials to ensure that every project is completed on time, within budget, and to the highest standards of quality. Our construction services include site preparation, foundation work, structural building, interior and exterior finishes, and more. We are dedicated to delivering exceptional results that meet our clients' specifications and exceed their expectations.

Infrastructure Development

Our expertise extends to the development of essential infrastructure projects, including roads, bridges, and utilities. We deliver robust and sustainable infrastructure solutions that support community growth and enhance connectivity. Our team handles the entire development process, from design and engineering to construction and project management. We focus on creating infrastructure that is durable, efficient, and environmentally friendly. Our projects are designed to improve transportation networks, enhance public safety, and provide reliable utility

Maintenance

We offer ongoing maintenance services to ensure the longevity and functionality of infrastructure. Our maintenance programs include regular inspections, preventative maintenance, repairs, and upgrades. We aim to keep infrastructure in optimal condition, preventing costly disruptions and extending the lifespan of assets. Our maintenance services cover a wide range of infrastructure elements, including roadways, bridges, utilities, and public facilities. By addressing issues promptly and effectively, we help our clients maintain the safety and efficiency of their infrastructure.

At Summit Engineering Solutions Cont. Co., we are committed to delivering superior civil works services that meet the highest standards of quality and efficiency. Whether it's construction, infrastructure development, or maintenance, our team ensures every project is executed with excellence and precision. Trust us to be your reliable partner in achieving successful and sustainable civil engineering solutions.

Our Telecommunication Services

As part of our expanding portfolio, our telecommunication services are designed to meet the evolving infrastructure needs of industries, municipalities, and large-scale developments. We provide comprehensive telecom solutions backed by a skilled workforce, modern tools, and a commitment to quality and safety.

Our capabilities in telecommunication include:

Fiber Optic Installation & Testing

We specialize in the installation, splicing, termination, and testing of fiber optic cables using industry-standard tools such as OTDR and Power Meters to ensure optimum signal performance.

Structured Cabling Systems

Design and installation of complete end-to-end structured cabling systems for both voice and data networks in residential, commercial, and industrial environments.

Passive & Active Network Components

Supply, installation, and commissioning of switches, routers, ODFs, patch panels, server racks, and other infrastructure required to support reliable telecom networks.

SCADA and Remote Communication Systems

Integration of Supervisory Control and Data Acquisition (SCADA) systems, remote telemetry units, and communication panels for efficient monitoring and control of utilities and industrial processes.

Telecommunication Infrastructure Development

Installation of towers, antenna mounts, duct banks, manholes, and pole lines, ensuring all work complies with international standards and client-specific protocols.

Maintenance & Troubleshooting

Routine maintenance, fault localization, and network optimization services to ensure minimal downtime and sustained network efficiency.

We approach every telecom project with a strong emphasis on planning, precision, and performance, working closely with clients to meet technical specifications, timelines, and operational goals. Our team is trained to adapt to fast-paced environments while ensuring safety and compliance throughout every stage of the project.

Our Mechanical Services

Our mechanical division is a vital arm of our multidisciplinary operations, providing high-quality mechanical construction, installation, and maintenance services across various sectors including oil & gas, water treatment, industrial facilities, and commercial infrastructure.

We offer a wide range of mechanical services, including:

Mechanical Equipment Installation

Assembly and alignment of industrial machinery such as pumps, motors, compressors, generators, and HVAC systems.

Piping Works

Fabrication, installation, and testing of piping systems for various media including chilled water, steam, gas, and chemicals. We work with carbon steel, stainless steel, HDPE, GRP, and other materials.

Welding & Fabrication

Skilled welding and custom fabrication work carried out as per project needs, with strict adherence to quality and safety codes.

Valve Installation and Flange Management

Installation and torqueing of valves, flanges, and fittings with pressure testing to ensure leak-proof performance.

Maintenance & Shutdown Support

Preventive and corrective maintenance services including equipment overhauls, mechanical troubleshooting, and shutdown support for critical infrastructure.

Testing and Commissioning

Complete mechanical system verification, pressure testing, flushing, balancing, and handover documentation to ensure operational readiness.

Our mechanical team brings a combination of technical know-how, hands-on experience, and commitment to quality that enables us to deliver complex mechanical solutions efficiently and reliably. We emphasize safety, precision, and timely execution to help our clients achieve long-term mechanical integrity and performance.

Contract Support Service


At Summit Engineering Solutions Cont. Co., we provide the essential tools, advanced equipment, and highly skilled professionals to support the demands of complex projects. Our contract support service is designed to be flexible, allowing you to efficiently scale resources based on your project's unique requirements. From specialized tools to top-tier equipment, we ensure that you have access to the best resources for optimized productivity and seamless operations.

With our focus on quality, efficiency, and expertise, we aim to enhance project timelines and results, providing the reliability needed to achieve outstanding outcomes. Our commitment is to equip your projects with resources that meet the highest industry standards and support your goals from start to finish.

What Sets Summit's Contract Support Service Apart?

At Summit Engineering Solutions Cont. Co., we distinguish ourselves by offering a comprehensive contract support service that includes not only skilled professionals but also high-quality tools and equipment to ensure your project's success. We carefully select our experts based on their extensive experience, specialized training, and adherence to strict safety and hygiene standards. Our team is equipped to integrate seamlessly into your operations, bringing efficiency, precision, and safety to every task. Whether you require specialized equipment or expert technicians for short-term or long-term projects, Summit's flexible solutions and commitment to excellence provide the support you need to achieve your goals and exceed expectations.

At Summit Engineering Solutions Cont. Co., we believe that "Alone, we can do so little; together, we can do so much." By harnessing the collective expertise and dedication of our skilled professionals, we are committed to achieving remarkable results and driving success through the power of teamwork and collaboration.



Tools and Equipment List

At Summit Engineering Solutions Cont. Co., we take pride in utilizing top-tier tools and equipment to ensure the highest standards of quality, precision, and efficiency in every project. Our extensive inventory is carefully selected to meet the varied demands of our engineering, construction, and support services, empowering our team to deliver reliable and effective solutions across all project phases.

Construction Vehicles and Heavy Machinery

Excavators	Scissor Lifts
Backhoe Loaders	Forklifts
Skid Steer Loaders	Dump Trucks
Boom Lifts	Mini-Excavators

Testing and Measuring Equipment

Thermal Imaging Camera	Laser Distance Measurer
5 KV Megger	Phase Rotation Meter
1 KV Megger	Clamp Meter
Earth Resistance Tester	Multimeter (Digital and Analog)
Insulation Tester	Voltage Tester

Power Tools and Machinery

Hilti Drilling Machines	Angle Grinder
Hydraulic Knockout Punch	Electric Cutting Machine
Impact Wrench	Cable Crimping Tool
Drill Machines	Demolition Hammer
Grinding/Cutting Machines	Heat Gun

Safety and Access Equipment

Aluminum Scaffolding	Personal Protective Equipment (PPE)
Safety Harnesses	Extension Cords (Heavy Duty)

Additional Tools

Portable Generator	Pipe Threading Machine
Cable Reel Stands	Work Lights

At Summit Engineering Solutions Cont. Co., we are committed to providing exceptional value through our comprehensive Electrical Item Trading and Equipment Rental Service. Whether you need top-tier electrical components or reliable, high-performance equipment, our services are designed to support your projects with the quality, flexibility, and expertise you deserve. With a focus on customer satisfaction, we ensure that you have access to the best products and solutions, tailored to meet your specific needs and drive your success.

List of Ongoing Projects

SL. #	Project Name	Type of Work	Contractor	Status
1	Extention Order for Drum testing, post installation testing, Splicing, OTDR END to END testing for OPGW	Telecommunication	SEPCO	Ongoing
2	Interface Work with Yanbu 4 - 110kV HV Substation for IWTP02 Project.	Electrical	EPC	Ongoing
3	RCC - Substation Civil Work for Chengdu Design & Research Institute	Civil Work	SINOMA	Ongoing
4	The Avenue Mall, Al Khobar - Plaster work	Civil Work	Havelock1	Ongoing
5	The Avenue Mall, Al Khobar - Screed Work	Civil Work	Havelock1	Ongoing
6	Demolition of 9 ARAMCO TFC, following ARAMCO standard	Demolition and Dismantling	TR	Ongoing
7	Drum testing, post installation testing, Splicing, OTDR END to END testing for OPGW	Telecommunication	SEPCO	Ongoing
8	EPC 10,000TPD Clinker Cement Plant Project	Finishing Work	SINOMA	Ongoing
9	EPC 10,000TPD Clinker Cement Plant Project	Civil Work	SINOMA	Ongoing

List of Completed Projects

SL. #	Project Name	Type of Work	Contractor	Status
1	OHTL Tower Foundation water proffing and painting as per SEC standard	Civil work	SEPCO	Completed
2	Replacement of Existing Outdoor Aindar Sub-30 with New GIS GIS	Civil	Abahsain Consolidated Co.	Completed
3	Splicing and Termination of Copper internet Cable in Padestal Installation	Telecommunication	SEPCO	Completed
4	MV Cable Fault Location Test, Damage repair and Termination	Electrical Work	SEPCO	Completed
5	Drum testing, post installation testing, Splicing, OTDR END to END testing for FOC.	Telecommunication	SEPCO	Completed
6	Installation of Fire-Fighting System for Industrial Facility and warehouse	Mechanical Work (MEP – Fire Fighting)	EPC	Completed
7	FOC Connection Withing Juaymah Substation	Telecommunication	EPC	Completed
8	Replacement of 13.8kv SWGR	Electrical Work	Abhasain	Completed
9	Revamping of 480 Volt Generator	Electrical Work	Abhasain	Completed
10	Power Supply to Sfaniya - Phase 1 (Complete FOC)	Telecommunication	Abahsain	Completed
11	Installation of Control and Protection Panle including cable laying & termination in Ain dar S/S	Electrical Work	Abhasain Consolidating Co.	Completed
12	Mansura Massrah Gold Project	Civil Work	L & T	Completed
13	McDermott Arabia Office	Civil Work	McDermott	Completed
14	Worley Parsons Office	Civil Work	Worley Parsons	Completed
15	Novaratis Office	Civil Work	Novaratis	Completed
16	Jafurah Upstream Pipeline Project	Civil and Infrastructure work	TR	Completed
17	Roshan Ewan Sedra 2 - Riyadh	Finishing Work	BCC	Completed
18	Haradh RTR Pipeline Project	RTR Pipeline	TR	Completed
19	Installation of MV & LV cable laying , termination & Testing	Electrical Work	Energy & Power Cont. Co. Ltd.	Completed
20	MV & LV cable laying , termination & Testing	Electrical Work	Rommel Electro Arabia	Completed
21	Installation of Fire-Fighting System for Shopping mall	Mechanical Work (MEP – Fire Fighting)	ABRAR	Completed
22	Haradh FOC Laying, Splicing and Testing	Telecommunication	SAIPEM	Completed



PDC CENTRAL PROJECT DEPARTMENT
RIYADH AREA PROJECT DIVISION

se السعودية للطاقة

REVIEW OF CONTRACTOR'S SUBMITTAL

Use: C for Civil, E for Electrical, M for Mechanical, CM for Communication, S for SCADA and SF for Safety

Submittal No.	EFC/24CN1019/01/D15-542 Rev.00	Date:	7-May-26
---------------	--------------------------------	-------	----------

PROJECT TITLE : Construction of TUMAIR 132/33KV Substation # 8507 & its Connection with Network through OHTL
CONTRACT No. : 4400021494 BI No. : JO No. : 1-2331145.01
CONTRACTOR : Energy & Power Contracting CO.Ltd. PLANT NO : #8507

To : Division Manager
Engr. Saleh A Al Ayari
Riyadh Area Project Division-Central
SEPCO(Saudi Energy Project Development Company)

From : Energy & Power Contracting CO.Ltd.
King Abdulaziz St. 1st Flr., Abahain Bldg
Al-Khobar 31952
Tel: (013) 898 1622
Fax: (013) 898-4236

ACCEPTANCE OF THE FOLLOWING SUBMITTAL IS HEREBY REQUESTED:
Check in the Drawings / Materials / Test Reports Others (Specify) Appropriate Box Sketches Equipment Pre-q

FILL-UP APPLICABLE INFORMATION BELOW:
Description : Prequalification for Subcontractor for Electrical activities in substation- SUMMIT ENGINEERING SOLUTIONS
Designer :
Manufacturer/Supplier :
Reference Specification : PTS-24CN1019
Attachment :

COMPLYING WITH SCOPE OF WORK AND TECHNICAL SPECIFICATIONS? YES NO
If "NO" INDICATE DEVIATIONS (Provide justification and attach supporting documents)

(Contractor) Submitted By : Project Manager Signature : Name : Ahmad Younes Date : 7-May-26	(National Grid SA) Received by : Project Engineer, Riyadh Area Project Division-COA Signature : Name : Engr. Mushtaq Ur Rehman Date : 08-05-2026
--	--

FOR NATIONAL GRID - SA USE ONLY

NO-SA HAVE REVIEWED THE ABOVE SUBMITTAL AND FOUND IT:
 ACCEPTABLE
 ACCEPTABLE, AS NOTED
 NOT ACCEPTABLE (RESUBMIT)
 PROVIDE ADDITIONAL INFORMATION
 SEE APPROVED COMMENTS

Remarks :
The above contractor (M/S Summit Engineering Solutions) approval is granted subject to compliance with NGRSE Engineering standards SOA 115 and safety requirements for the subject project.
The contractor shall upload all documents in the portal for further review.
The approval is granted on the responsibility of the main contractor.

Please use extra sheets if needed

Group Leader, Riyadh Area Project Division-COA
Signature :
Name : Engr. Zulfikar Ali Siddiqi
Date : 07-05-2026

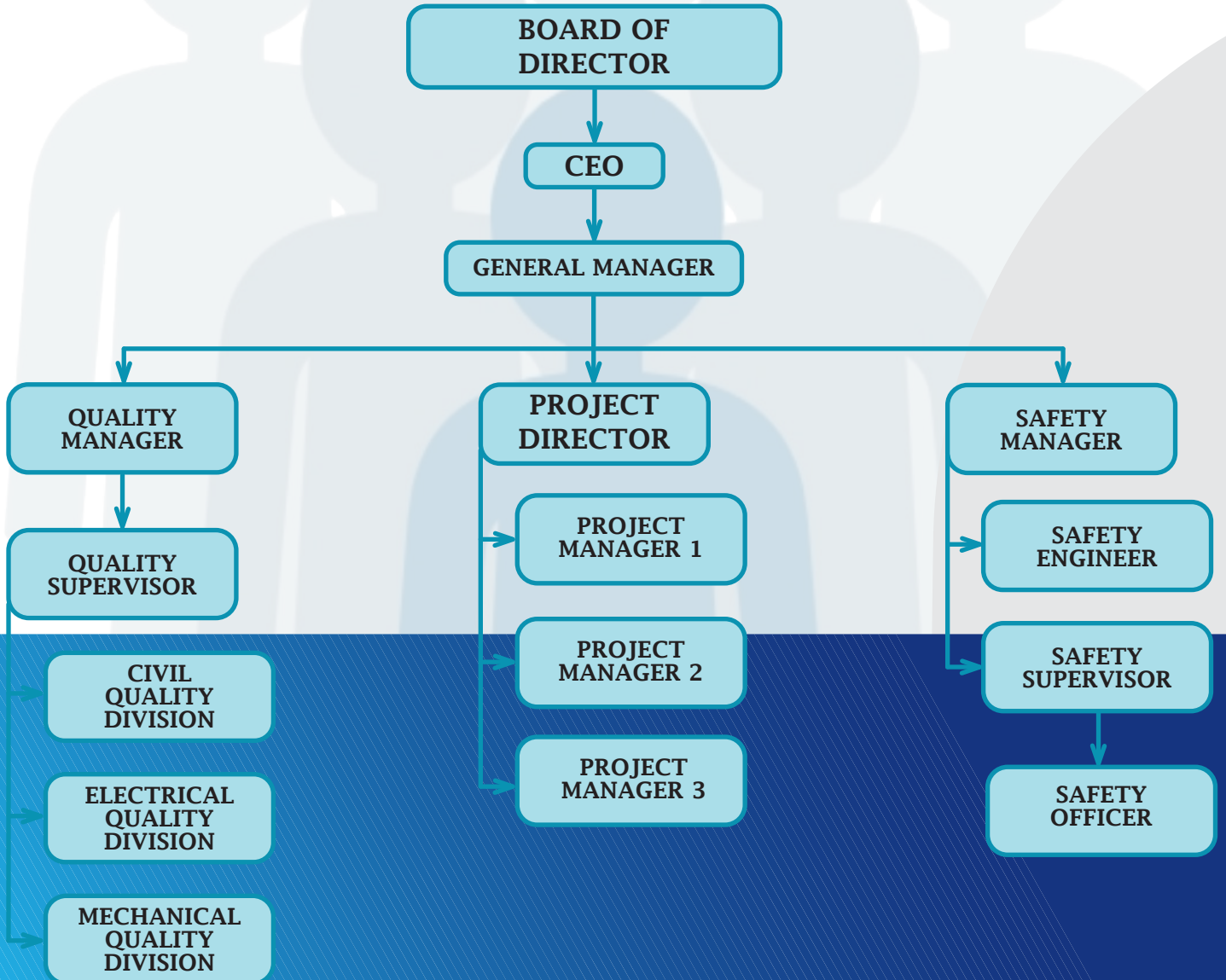
Received by Signature :
(Contractor) Name :
Date :

NOTE : Acceptance does not release the Contractor from his responsibilities in performing the work in strict conformance with Contract, Scope of Work and Technical Specifications.



ORGANIZATIONAL STRUCTURE

OUR TEAM AT A GLANCE



**TOGETHER LET'S BUILD
A FURUTE WHERE WE
CAN ALL LIVE WITHOUT
WORRIES.**



11+

HAPPY CLIENTS



32+

PROJECTS




sescoco.com

Where Quality Engineering Meets Dependable Service.

GET IN TOUCH

 +966 54 004 8692

 info@sescoco.com
mehrab@sescoco.com
thohid.i@sescoco.com

 KING FAHAD ROAD, 3404 AL BADIYAH,
DAMMAM - 32243, SAUDI ARABIA